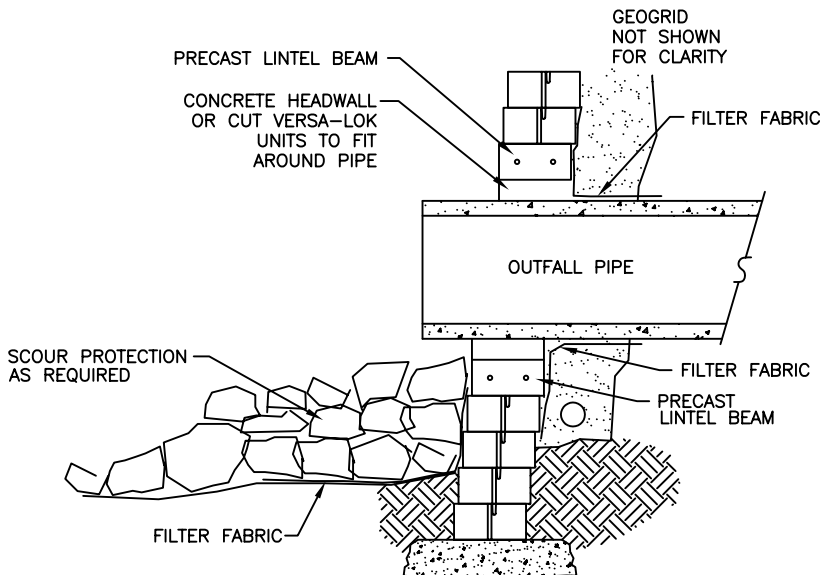


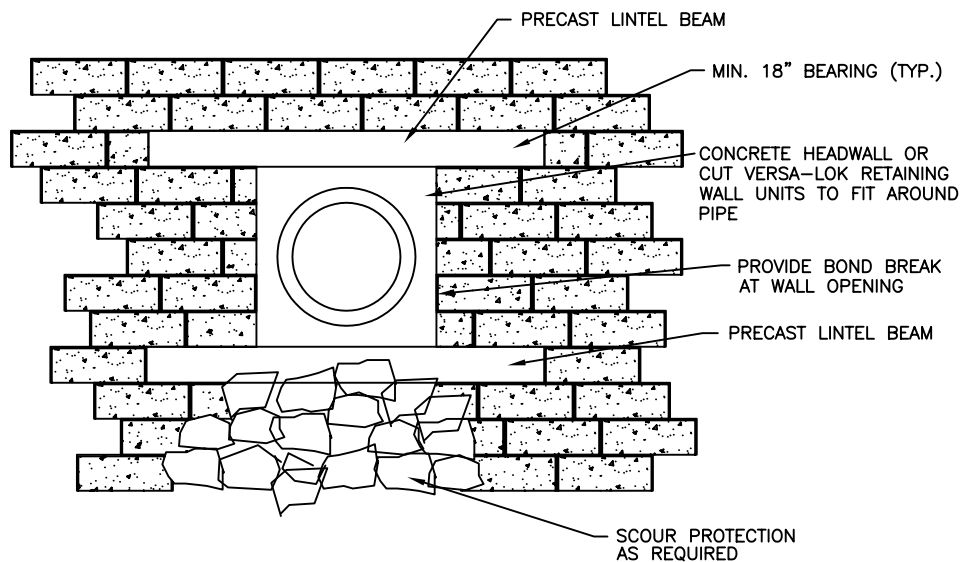
LINTEL NOTES:

1. FINAL BEAM SIZE, REINFORCEMENT, AND CONFIGURATION TO BE DESIGNED BY PROJECT ENGINEER
2. LINTEL BEAMS SHALL BE PRECAST WITH MINIMUM 7 DAYS CURE
3. HEIGHT OF BEAM SHALL CORRESPOND TO HEIGHT OF VERSA-LOK UNIT(S)
4. PLACEMENT OF LINTEL BEAMS SHALL BE CONSISTANT WITH THE PLACEMENT OF THE OUTFALL PIPE
5. INSTALL OUTFALL PIPE PRIOR TO CONSTRUCTION OF WALL ABOVE
6. OUTFALL PIPE TO EXTEND BEYOND BASE COURSE OF WALL NO LESS THAN 6"
7. GEOTEXTILE FABRIC SHALL BE INSTALLED AROUND PIPE OPENING
8. LINTEL TO EXTEND MINIMUM 18" EITHER SIDE OF OPENING



WALL W/ PIPE PENETRATION

SECTION  
SCALE: NONE



WALL W/ PIPE PENETRATION

PROFILE  
SCALE: NONE

NOT FOR CONSTRUCTION

THESE PRELIMINARY DETAILS ARE INTENDED AS AN AID IN DESIGNING ATTRACTIVE, DURABLE RETAINING WALLS WITH VERSA-LOK STANDARD UNITS. FINAL DETERMINATION OF THE SUITABILITY OF ANY INFORMATION OR MATERIAL FOR THE USE CONTEMPLATED, AND ITS MANNER OF USE, IS THE SOLE RESPONSIBILITY OF THE USER. A FINAL PROJECT SPECIFIC DESIGN SHOULD BE PREPARED BY A QUALIFIED, LICENSED, PROFESSIONAL ENGINEER.



**VERSA-LOK®**  
Retaining Wall Systems

(800)770-4525 fax(651)770-4089  
6348 Hwy36 Ste1, Oakdale, MN 55128 **Solid Solutions™**

VERSA-LOK DETAILS

WALL WITH PIPE PENETRATION

SCALE:	AS NOTED
DRAWN BY:	PPS
CHECKED BY:	
DATE:	10/03
DWG. NO.	R18 WALL WITH PIPE PENETRATION